

Dayliter Shade Installation Instructions

S Series (Wand Operated)

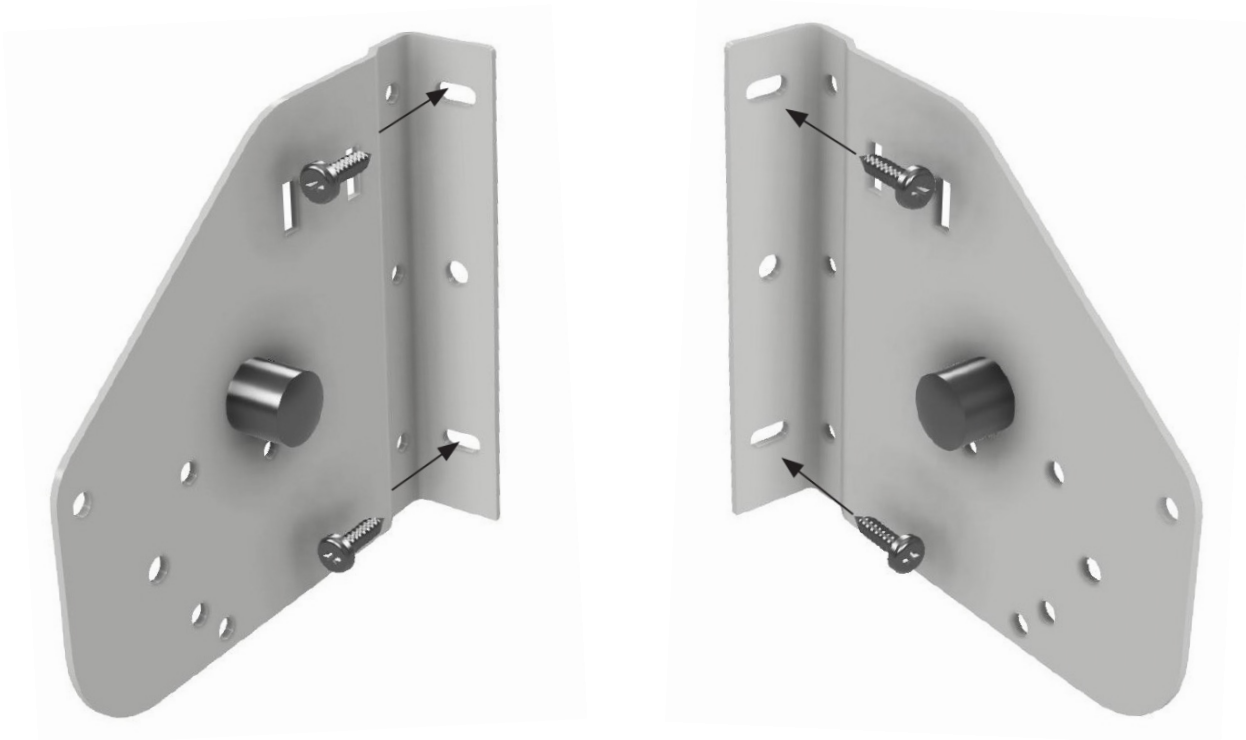


STEP 1

Bracket installation



Using the template provided hold against the window head and mark the location of the mounting screws. Use against window frame for front mount and against jamb for side mount. If no template is available mark the bottom of the bracket using the lightshelf size as a guide (mark 16" down for S1600 lightshelf, 18" for S1800 etc.)

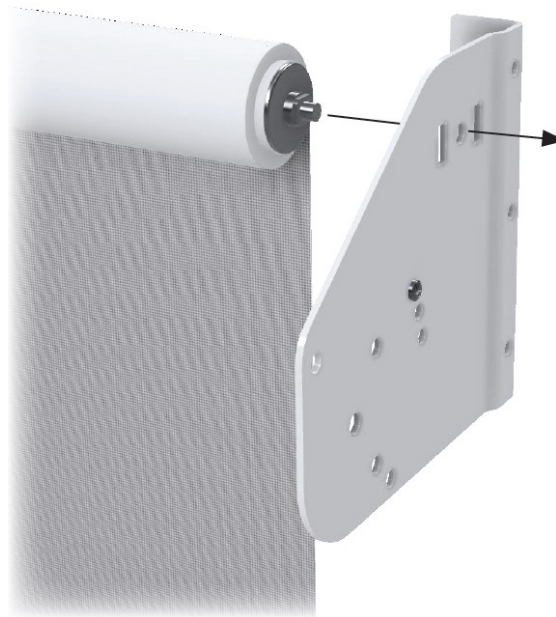


Attach mounting brackets with the appropriate screws (provided).

STEP 2

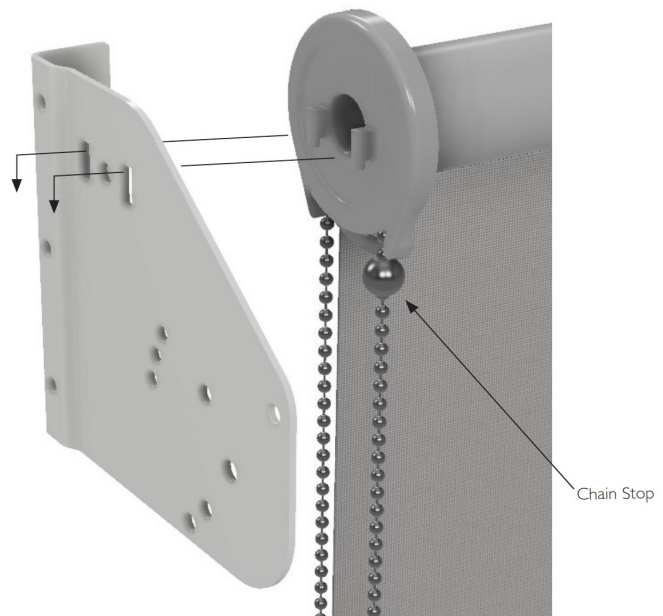
Roller Shade Installation

Insert spring loaded pin-end of roller shade into bracket and compress

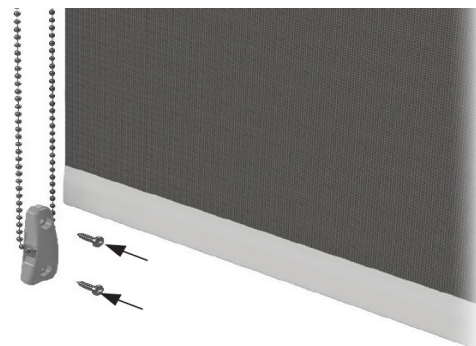


With pin-end compressed slide (walrus) teeth into slotted openings and pull down until the clutch is seated firmly in the slots.

Add ball stop to front chain when shade is in the correct closed (down) position – add ball stop to rear chain when shade is in the correct open (up) position.



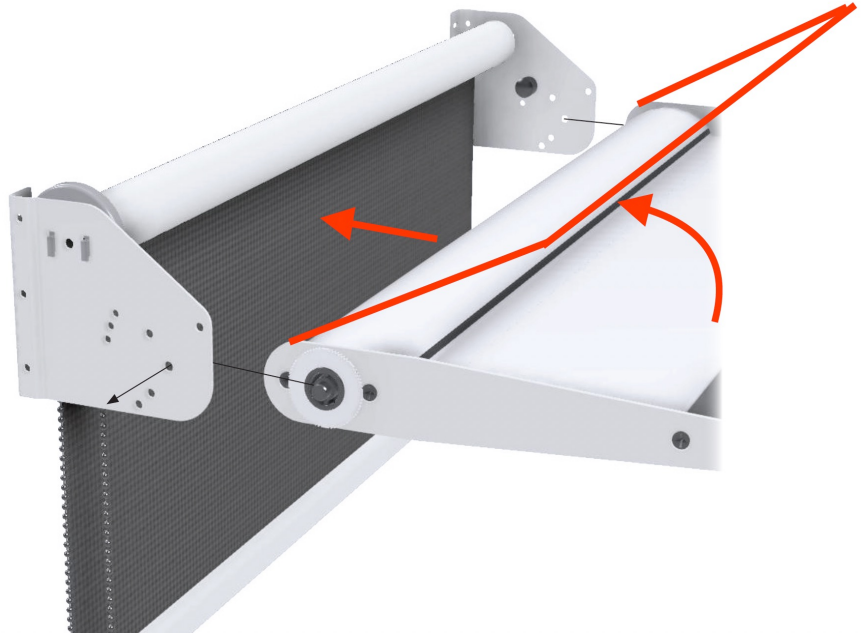
Fasten attached chain safety device to the jamb.



STEP 3

Lightshelf Installation

When inserting the lightshelf hold at an angle upward to clear the rubber stop.



With the lightshelf held at an angle compress the spring-loaded pin-ends and slide it back into the “hockey stick” slots until it snaps in – slide the lightshelf back until the pin-ends seat into the end of the slot.

Rotate the lightshelf down toward you and it will come to rest at a parallel position. To change this “open” position adjust the rubber stops to allow the lightshelf to sit at an angle to suit the aesthetic preference.

