



DAYLIGHT BY DESIGN



THE **DAYLITER** & **SKYLITER** SHADING SYSTEMS



“A room is not a room without natural light”

Louis Kahn

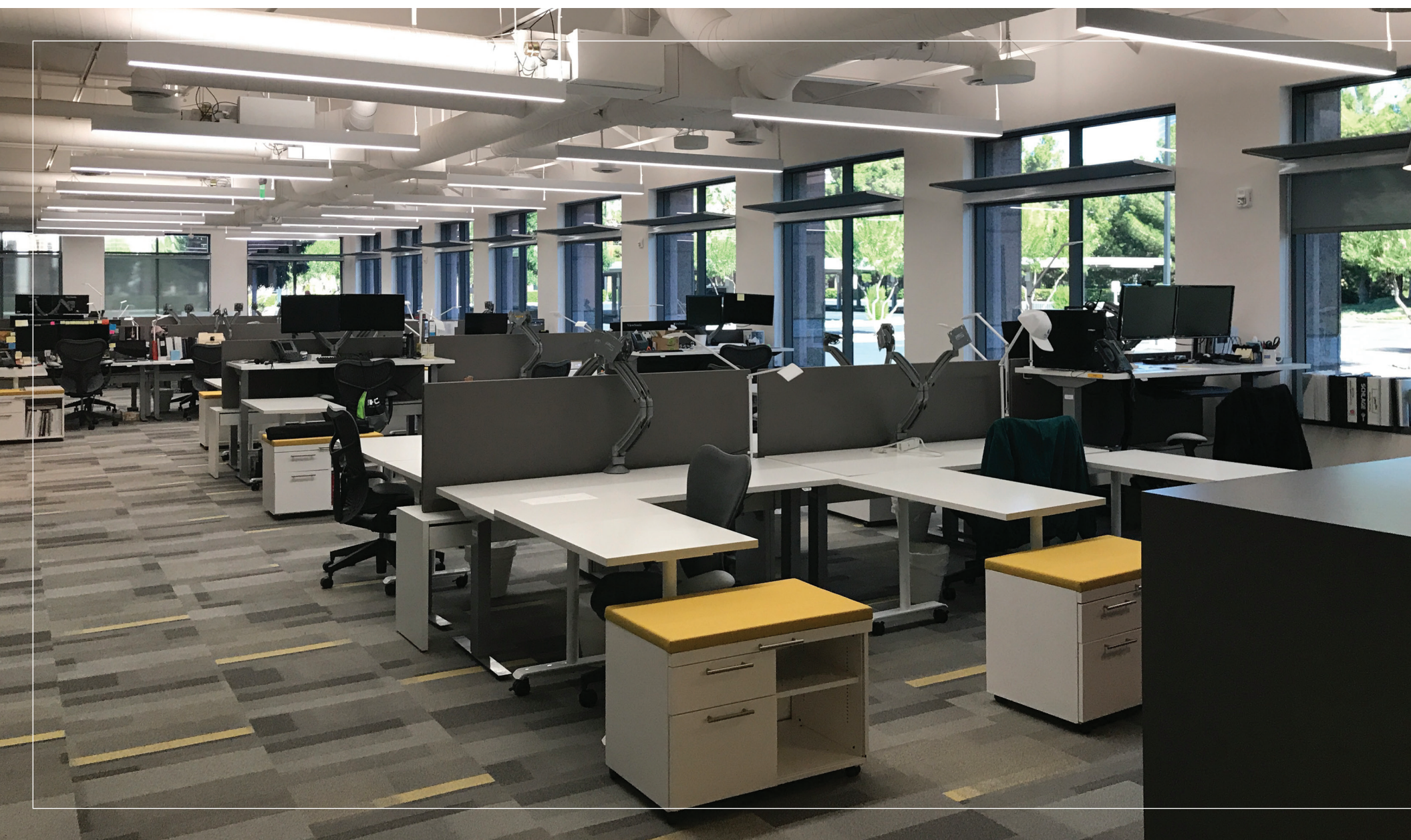
Why are we so willing to allow natural light to be blocked as part of our attempt to keep out the heat of the sun?

Most conventional shading systems force you to choose between shade and daylight. Our solutions offer the best of both worlds!

The Dayliter Shading System solves the conflict between shading and daylight while actually expanding the interior daylight zone. Our innovative use of rotatable fabric lightshelves promotes the entry of glare-free daylight. The lightshelves may be deployed at various angles to allow full daylight management on a daily and seasonal basis.

Everyone agrees; ***natural daylight is simply good for the body and soul!*** When harvested correctly daylight has a positive impact on patient outcomes, learning, intellectual development and productivity. The fact that it also reduces energy consumption is a distinct bonus!

❖ This page and opposite feature the SW1800 installed at Cunningham Group Architecture's Las Vegas office.





“Daylight reveals color; artificial light drains it”

Helena Rubinstein

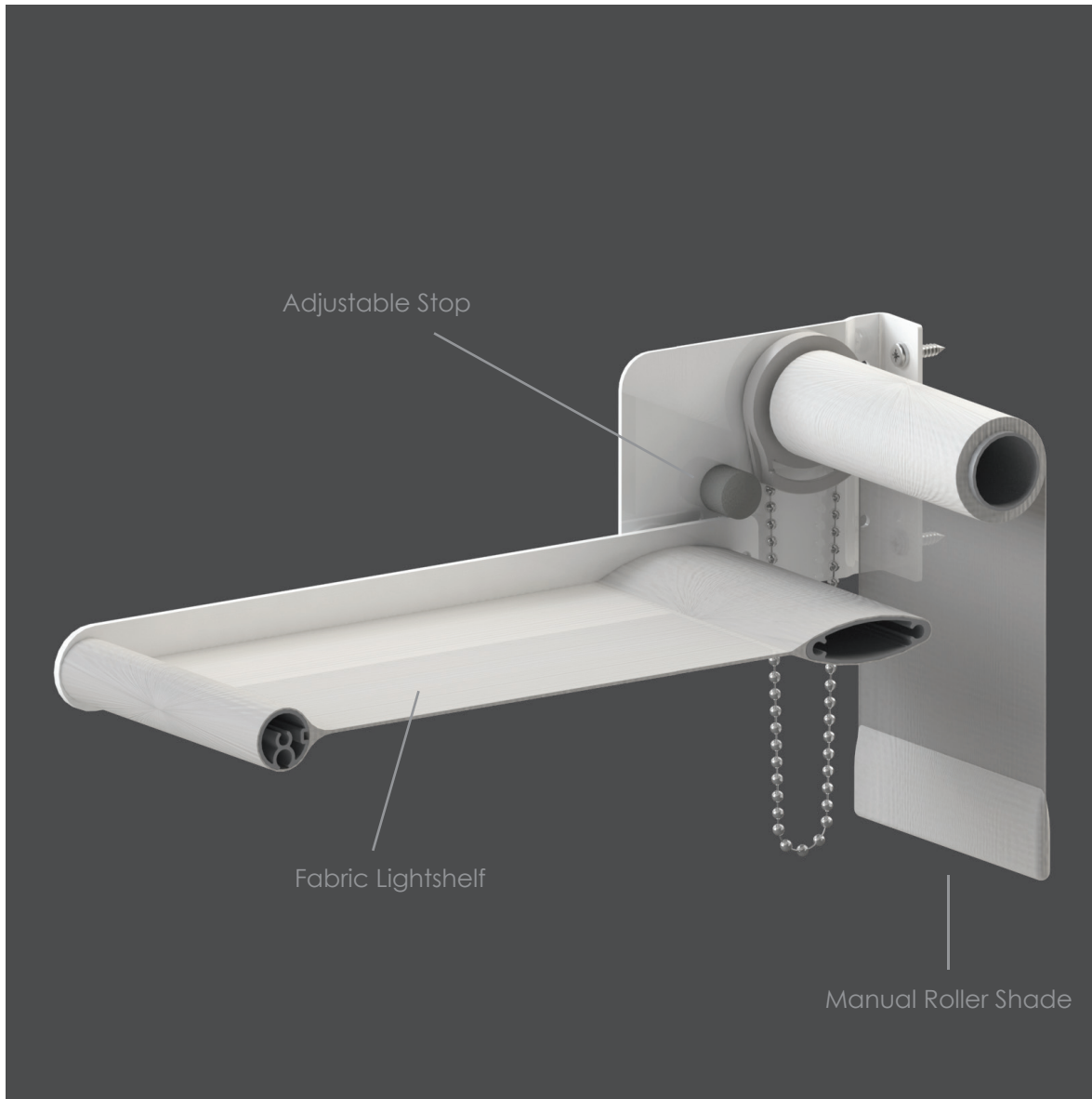
To take full advantage of this fact it is essential for the interior shading system to be infinitely configurable and align with the daylighting goals of the designer.

Use a single lightshelf or link several to create a stack driven by either the height of the clerestory segment of the window or the aesthetic goals of the building.

Use a single roller shade or a dual shade with both solar and blackout options depending on the needs of the occupant or room type.

All lightshelves in the S, L and D series are designed to close for room darkening as needed. Operating options provide the ability to “park” the lightshelf at intermediate positions for full daylight management.

- ❖ Left to right are the S Series, L Series and SD (dual shade) as installed at the Indoor Sky office.

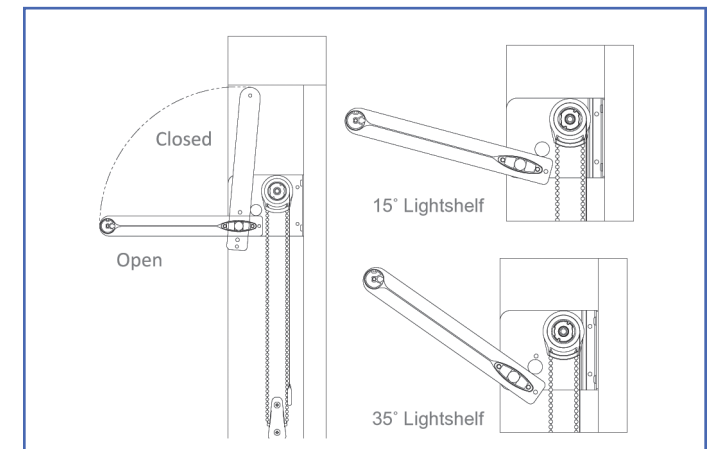


S Series

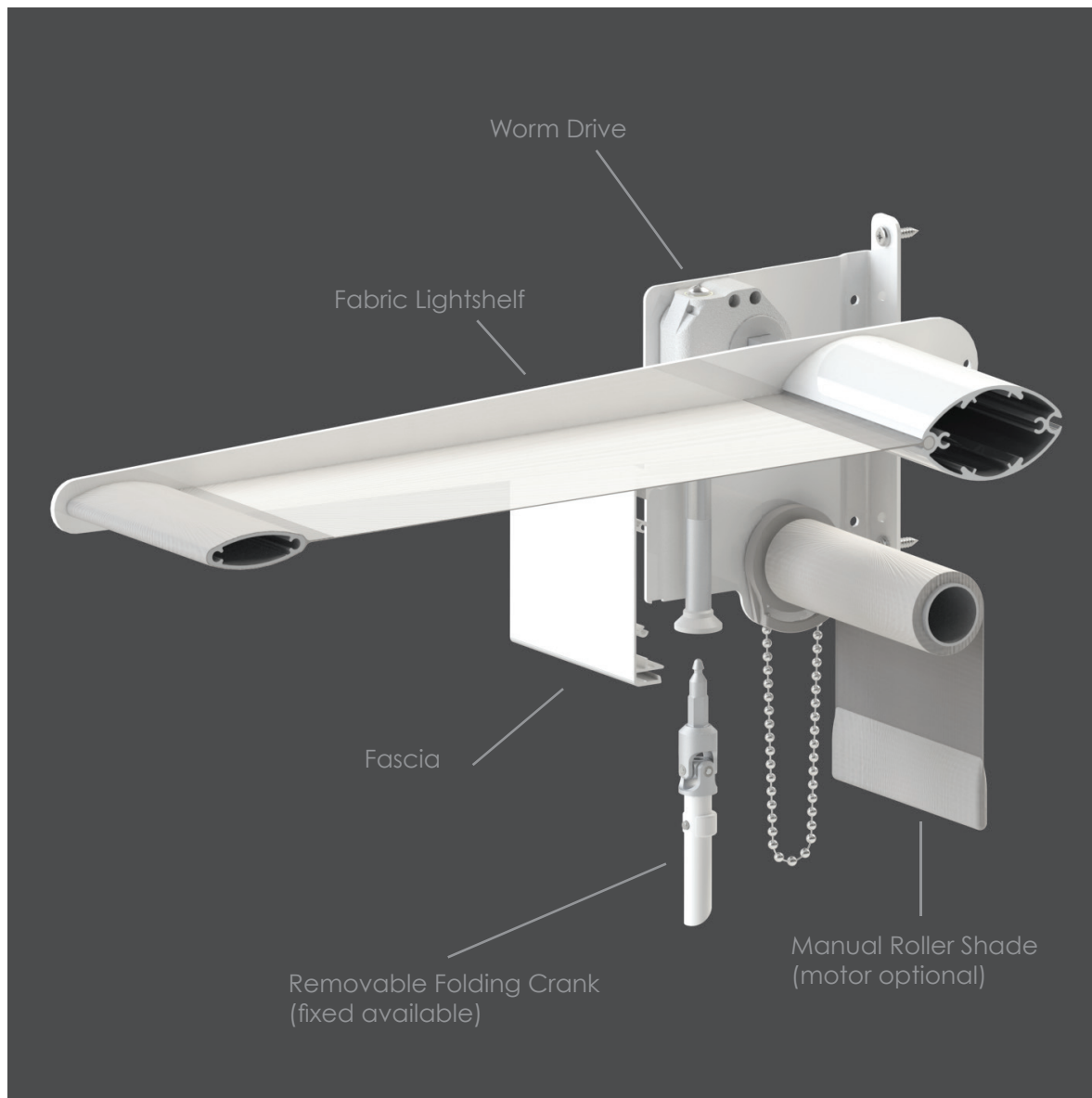
The lightshelf is operated by hand or pole and uses an adjustable rubber support to set it's open position. The lightshelf may be set at one of three angles to suit the location and daylighting preference.

The roller shade is chain operated.

Details subject to change

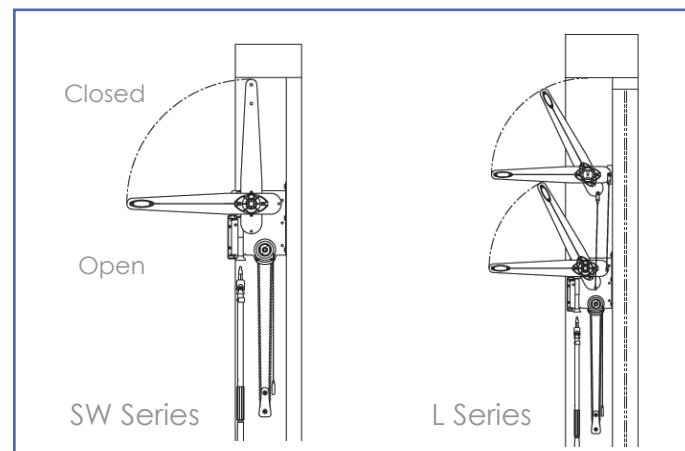


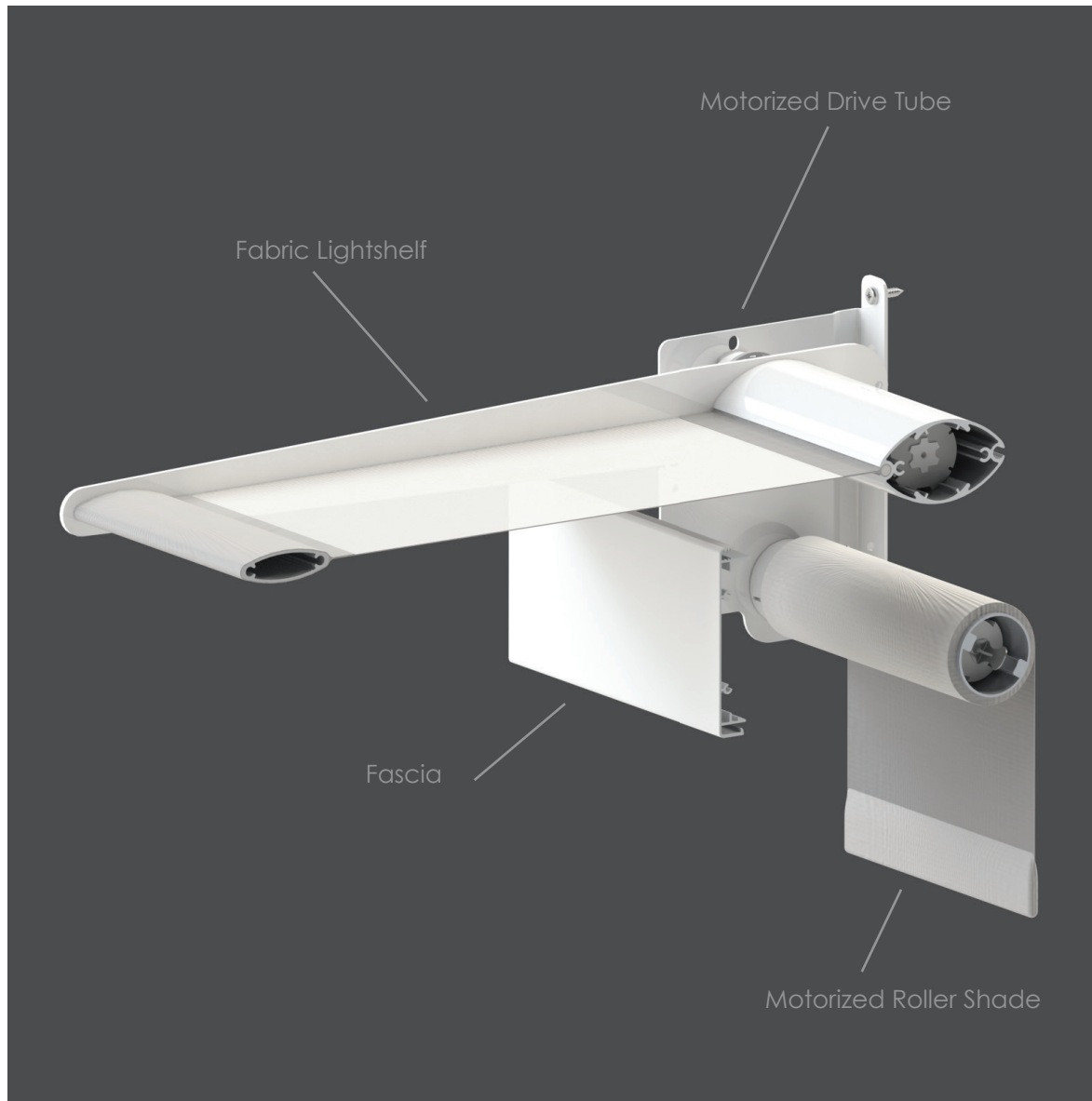
US Patent #6,988,525



SW & L Series

Using a highly geared, self-braking worm drive the lightshelf may be positioned anywhere from 0 to 90° for infinite control of daylight entry. It may also be rotated downward for ease of cleaning and is driven by a detachable folding crank.

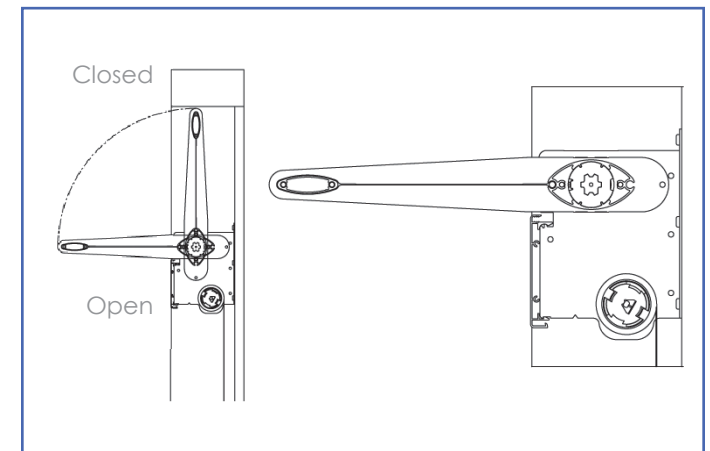




M Series

By gearing down a tubular motor to slow the speed of rotation we are able to motorize the lightshelf and roller shade and have them controlled from the same remote control or wall switch. This allows our system to be fully integrated with most building management systems.

Details subject to change



US Patent #6,988,525



"I do not believe that architecture has to speak too much. It should remain silent and let nature in the guise of sunlight and wind."

Tadao Ando

The Skyliter Shading System is infinitely configurable to suit large expanses of glass in skylights, curtain wall and atria. Like the Dayliter Shade, this system provides both shading and daylighting by leveraging the same design principles.

The system can mimic the contours of monumental skylights with unlimited lineal dimensions. As with almost every Indoor Sky product, the object is to expand daylight zones by way of diffused daylight on adjacent surfaces (or lightshelves).

Large commercial lobbies are particularly prone to the problem of heat gain due to their monumental nature. The tremendous flexibility of this system allows maximum design freedom for the very first time!

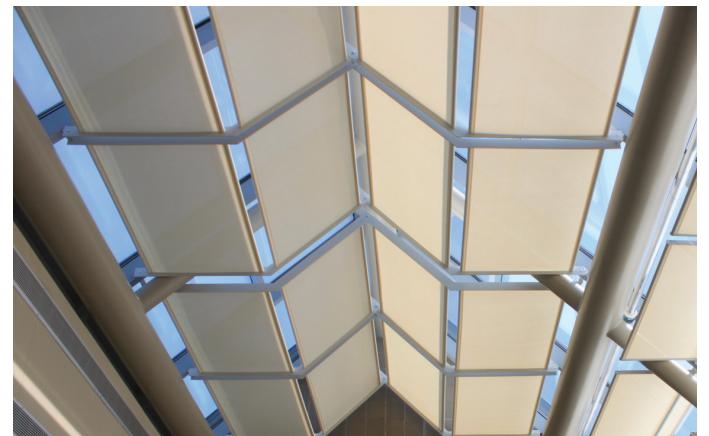
With individual skylights the Skyliter not only blocks direct sunlight but helps introduce diffused daylight to adjacent ceiling surfaces creating an additional interior daylight zone.

❖ This page (and front cover) features the Jersey Shore State Bank in Williamsport by Anthony Visco Architects



- ❖ Featured to the left is the Cancer Institute at Penn State Hershey Med Center and below the Phoenix office of Cuningham Group Architecture.

Shown at the bottom is the canopy at Jersey Shore State Bank.





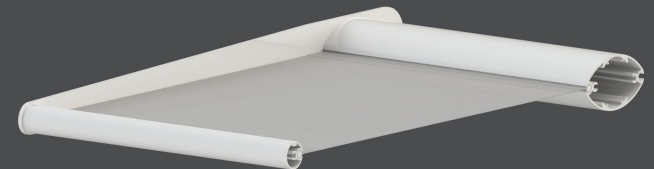
Lightshelves

Individual lightshelf sizes are available up to 96 inches wide in depths of 10 to 24 inches (in 2 inch increments). The model number indicates the depth of the lightshelf ie: SW1600 denotes that it is 16 inches deep. Custom sizes available on consultation with the factory.

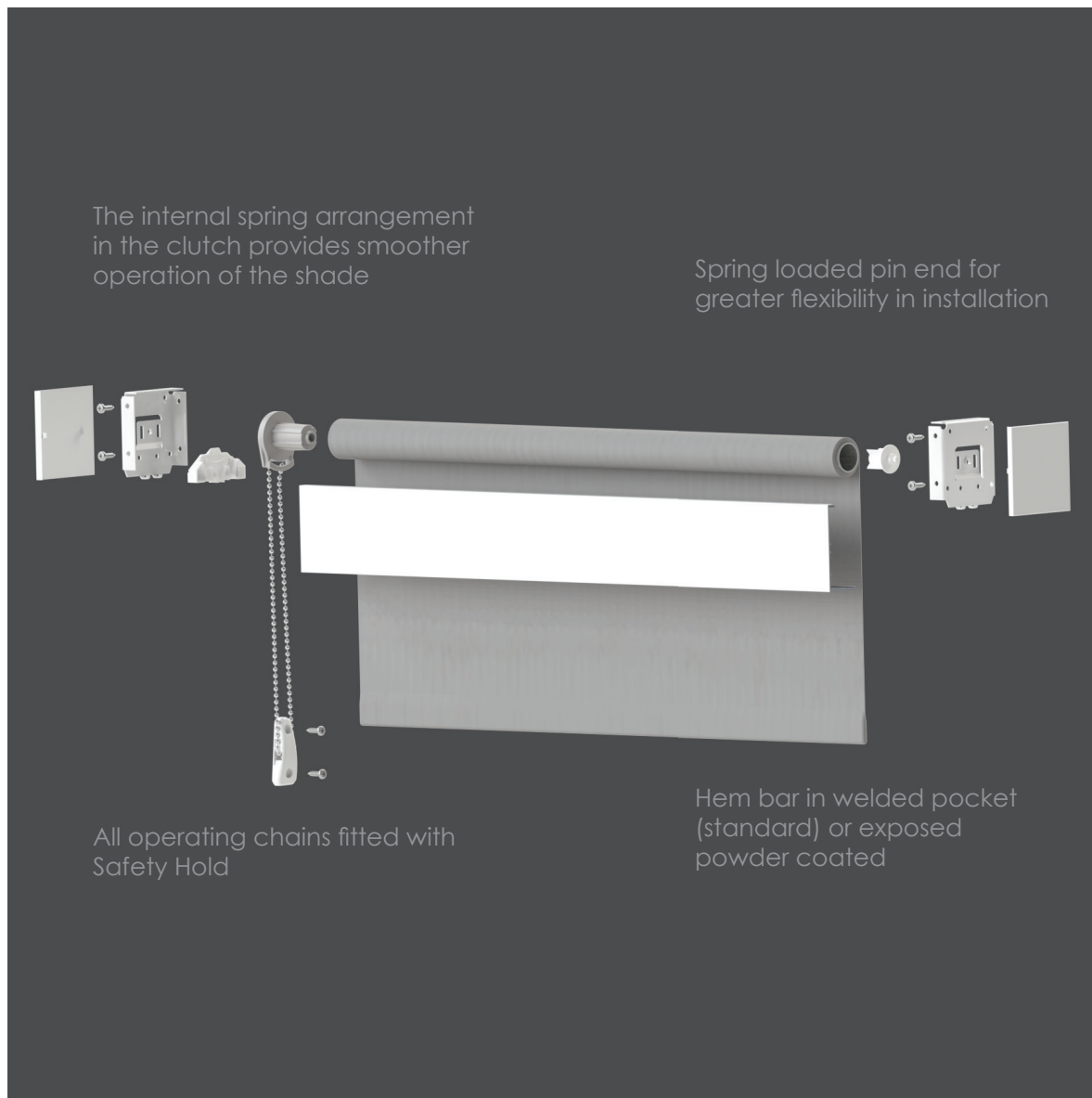
Lightshelves may be "stacked" and connected with a stainless steel aircraft cable system for synchronous operation using a worm drive. Limit of (3) shelves without factory consultation (L Series shown left).

Lightshelf fabric matches roller shade fabric (black out in Dual Shade) but may be upgraded to a metallic top finish for greater daylight penetration.

The front fabric tube may be hidden in the fabric pocket or exposed and powder coated.



Use round fabric tube option for exposed front edge with powder coated finish.

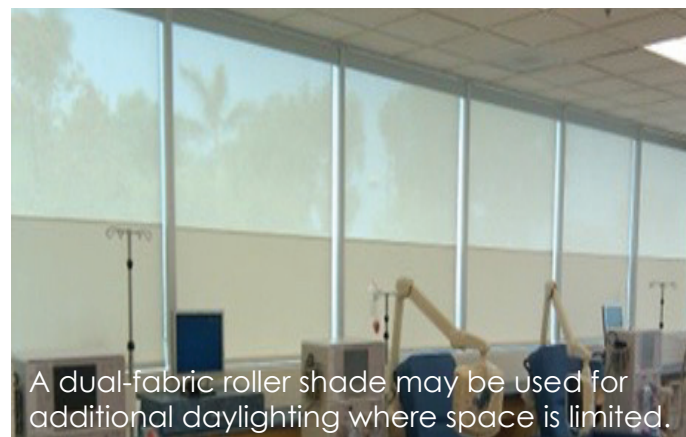


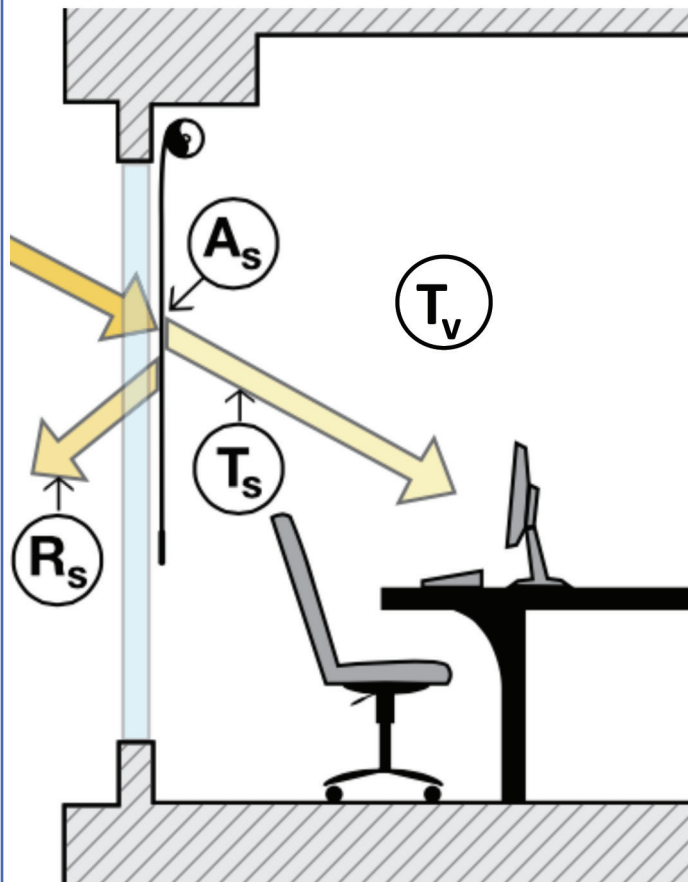
Roller Shades

For projects that require a mix of conventional roller shades and Daylitter Shades we offer an almost unlimited selection to suit openings of every shape and size, and featuring a myriad of fabric patterns and colors. Other options include PVC free and 100% recyclable materials for a sustainable environment.

Clutch selection, tube diameter and fascia size are all carefully engineered to suit the size of the window opening. Single units are available up to 16 feet wide by 12 feet high with spring assist technology available for ease of operation.

Full motorization is also available (see page 13)





Because daylight interacts with shade fabric in a number of ways, consideration should be given to solar performance metrics when choosing a fabric:

Openness Factor

The percentage of direct light that is transmitted through the fabric

Visible Light Transmittance (Tv)

Percentage of visible light that passes through the fabric; lower values = lower glare.

Solar Transmittance (Ts)

Percentage of solar radiation that passes through the fabric.

Solar Absorption (As)

Percentage of solar radiation absorbed by the fabric.

Solar Reflectance (Rs)

Percentage of solar radiation reflected back out by the fabric.

Fabric Selection

Color is one of the most important factors in determining performance. Dark colors provide the best transparency during daylight while light colors reflect heat and help preserve the levels of natural light within the room.

Solar Screen

Controls glare and heat without disturbing the view. Our standard solar screen has a white backing for maximum performance of the lightshelf.

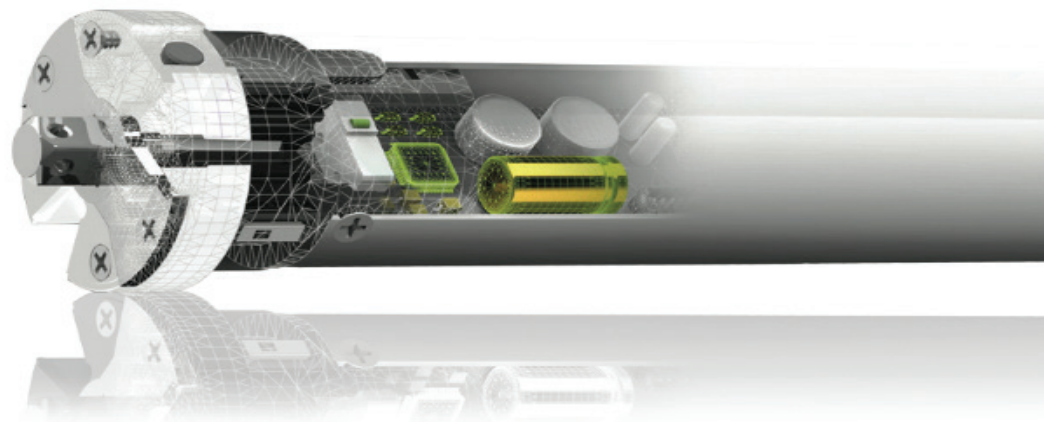
Metalized/High Performance

These fabrics are made with a microscopic layer of aluminum applied to the back of the textile in order to reflect more heat and daylight.

Blackout

When privacy or complete room darkening is desired blackout fabrics are the most effective solution.





No wires for Easy Retrofit

Extended battery life with 500 expected up/down cycles per charge

Rechargeable from 12v wall charger

No bulky, external battery pack



BATTERY
POWERED



LEVEL
CONTROL



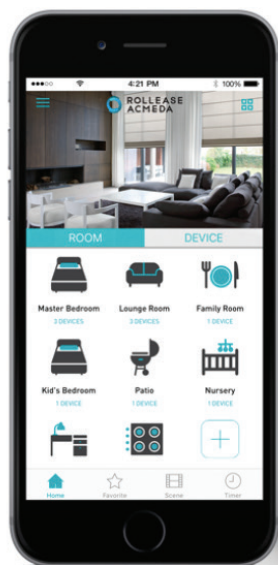
FAVORITE
POSITION



SELECTABLE
RPM



QUIET
OPERATION



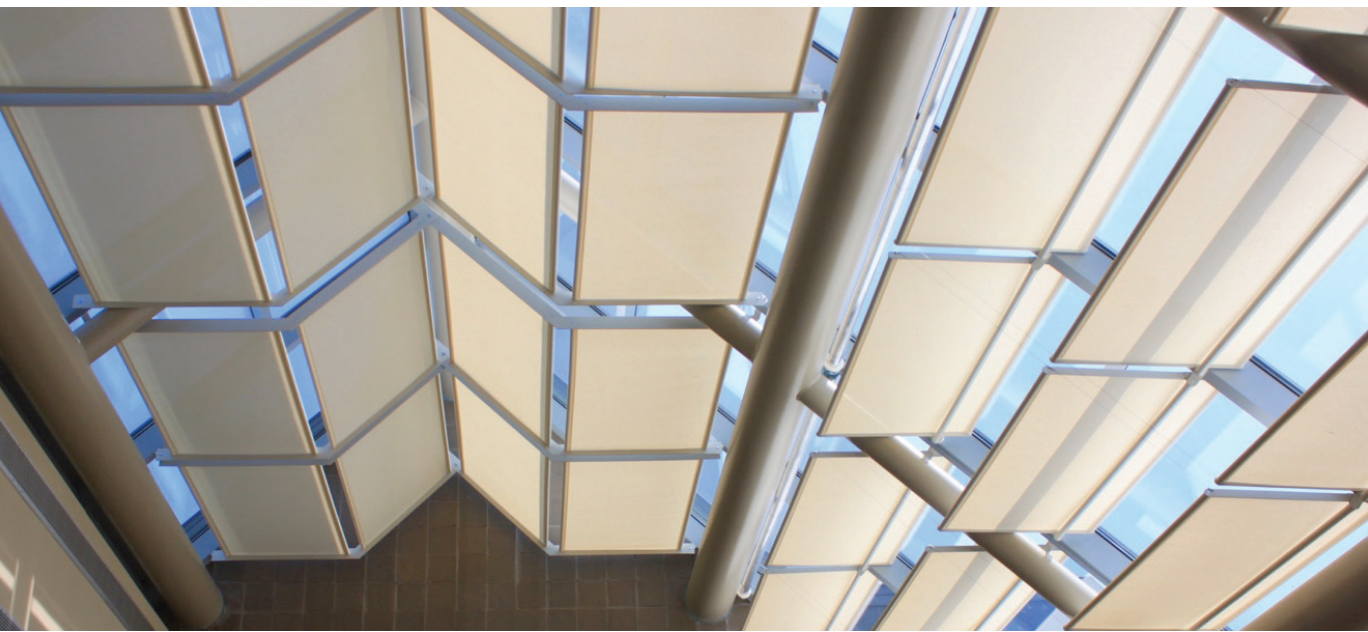
Innovation doesn't stop with the shade!

Working with several tubular motor manufacturers allows Indoor Sky to select the best solution for each application. Careful design of the custom tubes used in the Daylitter Shading System facilitate this selection process.

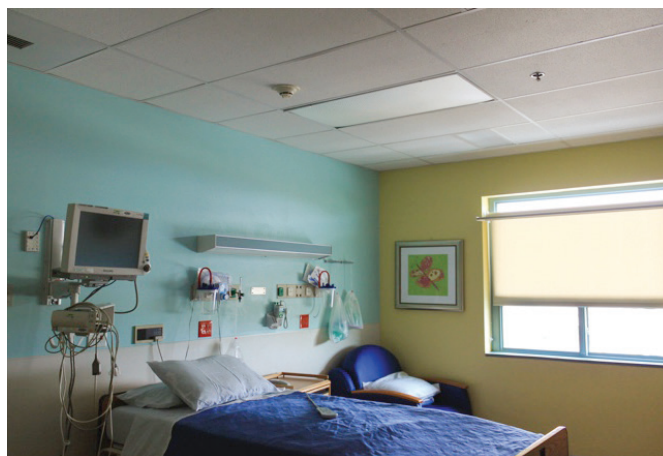
Our preference is to use easily rechargeable state-of-the-art lithium-ion battery technology integrated within the shade. This allows wireless installation of the shading system which not only reduces the cost of the project but makes our product suitable for both retrofit and new construction applications. For certain applications, such as very large shades and when shades are not practically within reach, we offer a full selection of hard-wired A/C motors.



Remote Control and Wire Free Wall Switch



Top Row from Left: L2200; S2200
Bottom Row from Left: Skyliter 2900; S1000; S1600





Founded in 2013, Indoor Sky is headquartered in Williamsport, Pennsylvania and is proud to provide products "Made in America"! The company is dedicated to maximizing the benefit of daylight, the ultimate sustainable resource, in the built environment. Each and every one of Indoor Sky's products are designed to expand glare-free daylight zones and help solve the conflict between shading and daylighting. The key driver of our mission is collaboration with the design community to continue to change the interior daylighting landscape.

We are very willing to develop new products and applications, please don't hesitate to contact us with your thoughts and ideas.

Thank you
Paul Moulton
Founder & President

Williamsport, PA 17701
Telephone: 570.651.5105